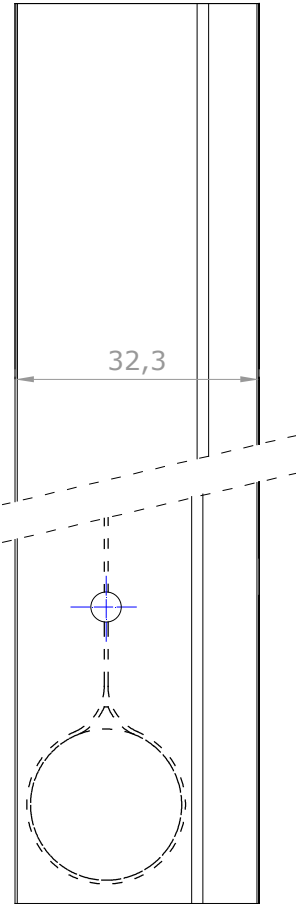
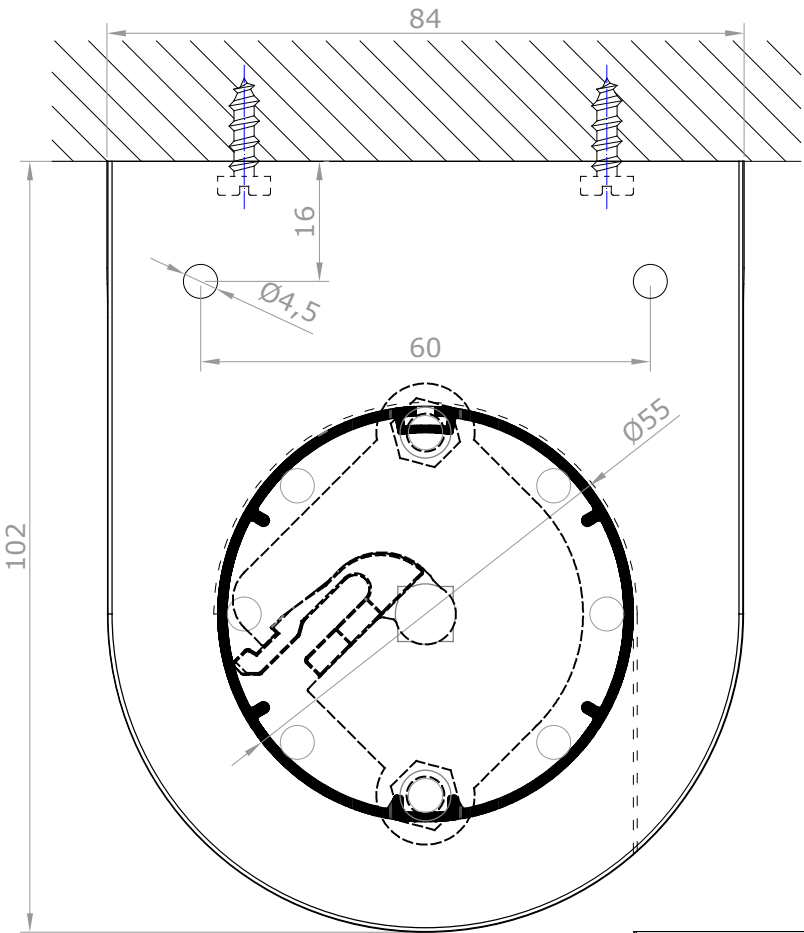
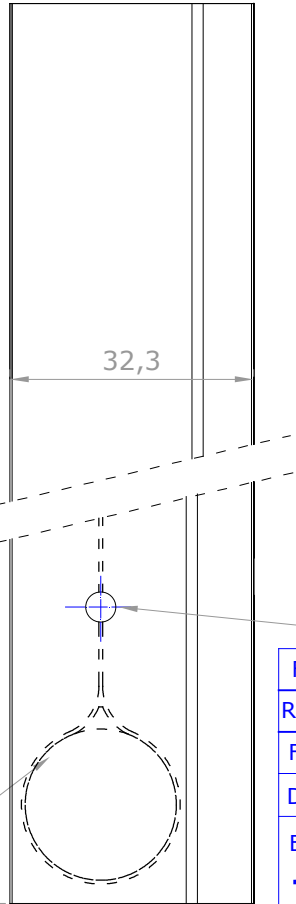
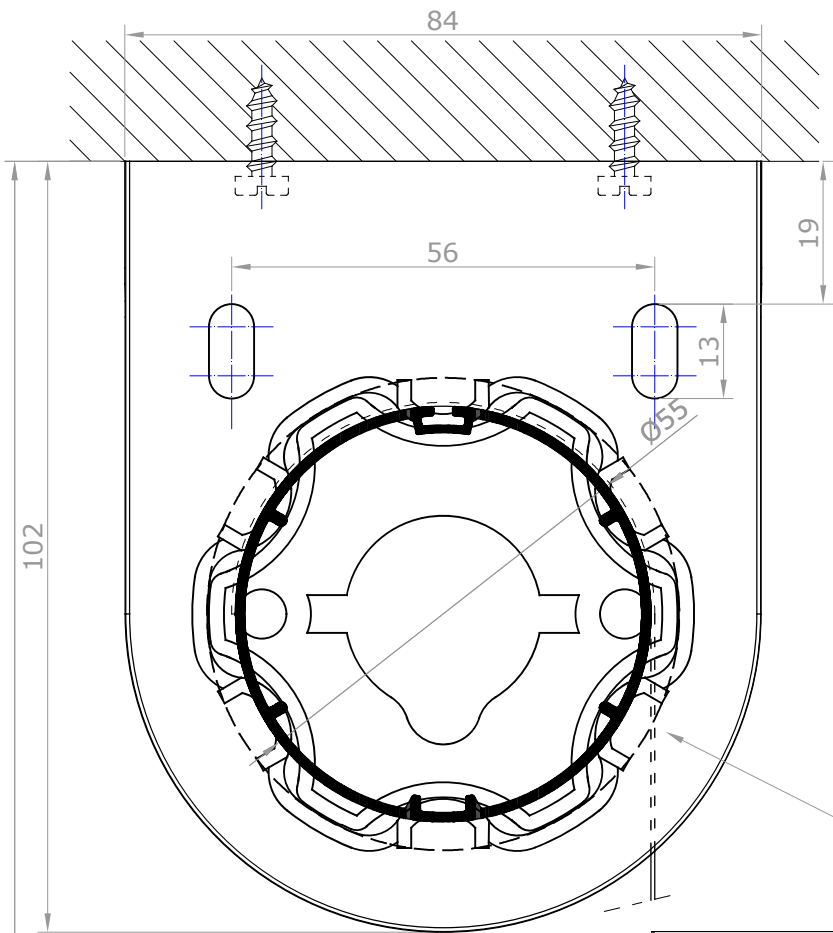


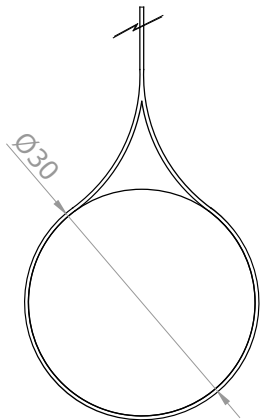
LADO APOYO



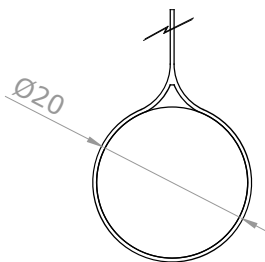
LADO MANDO



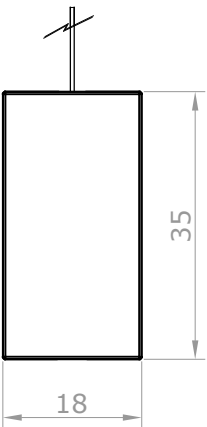
Opción tubo Ø55,Ø65



Detalle 1:1 terminal oculto Ø30mm



Detalle 1:1 terminal oculto Ø20mm

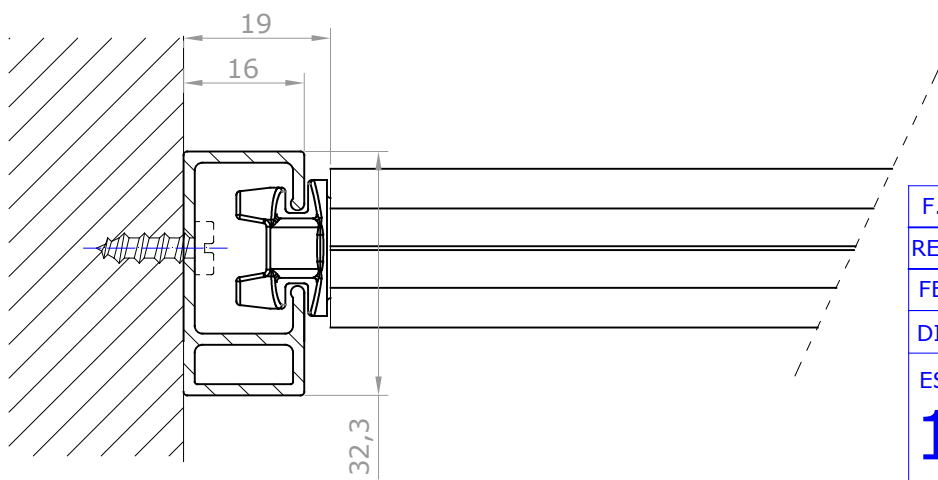
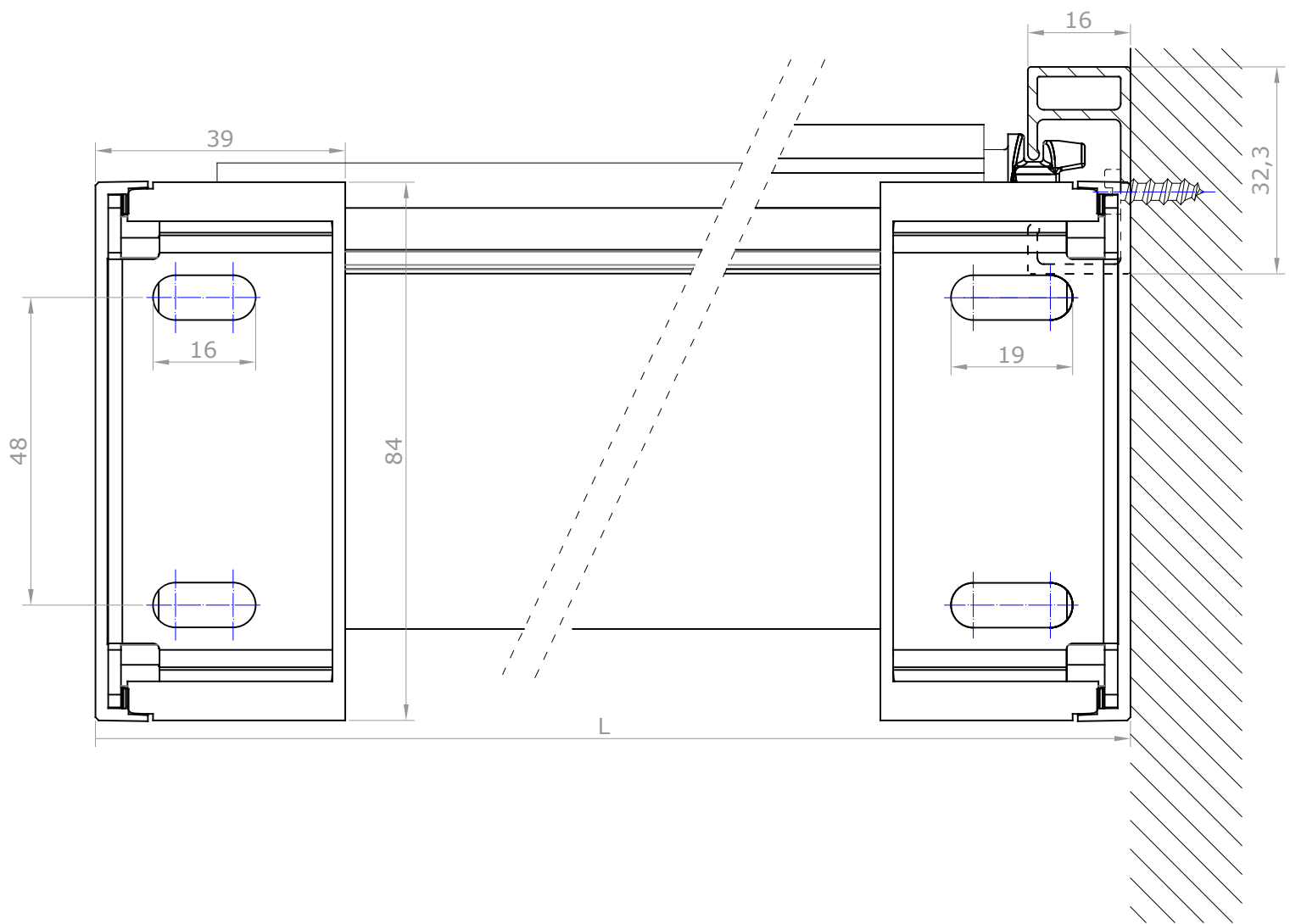
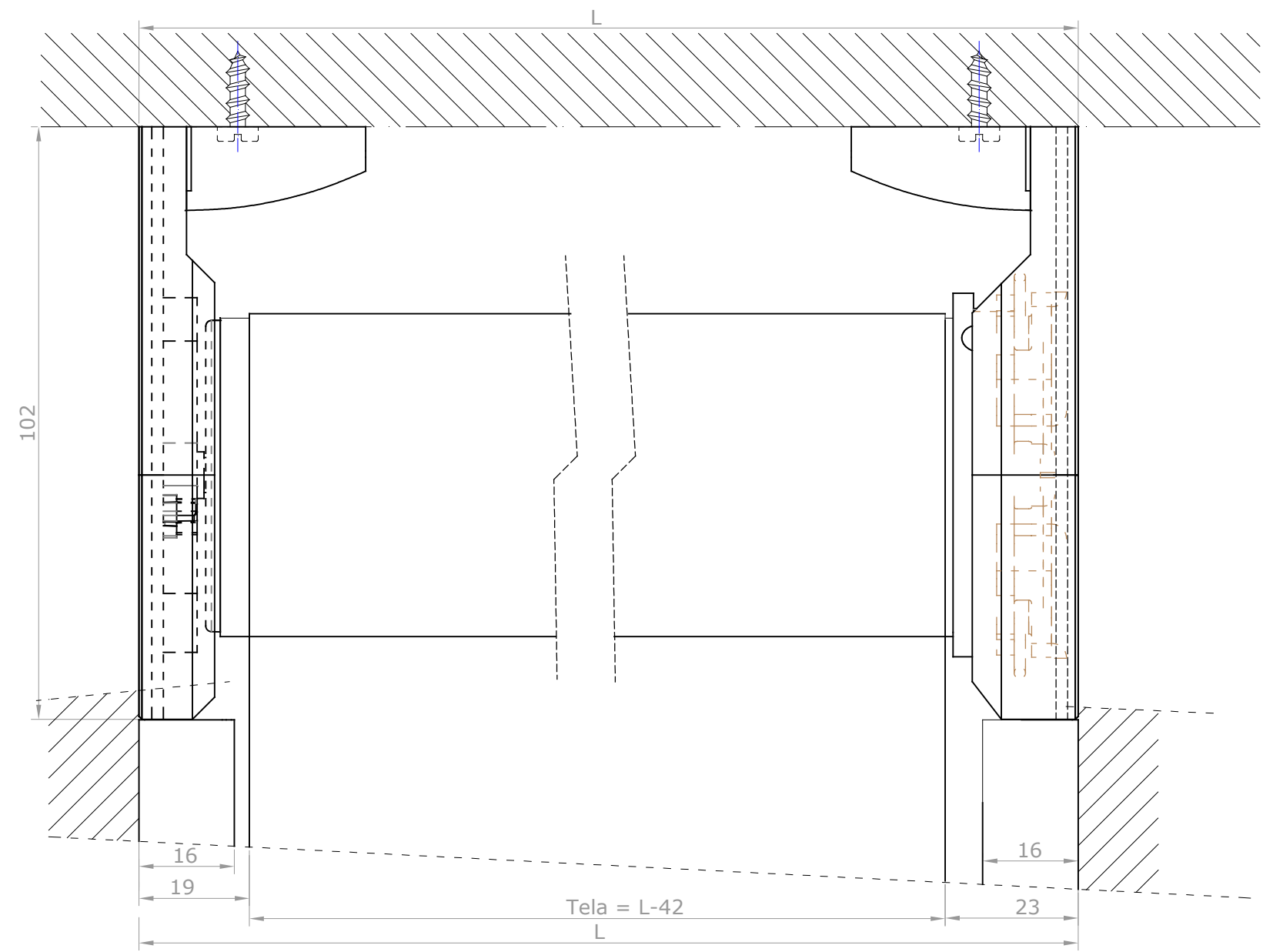


Detalle 1:1 terminal Slim 35

Taladro instalación lateral

Opción terminal Ø20, Ø30 y Slim 35

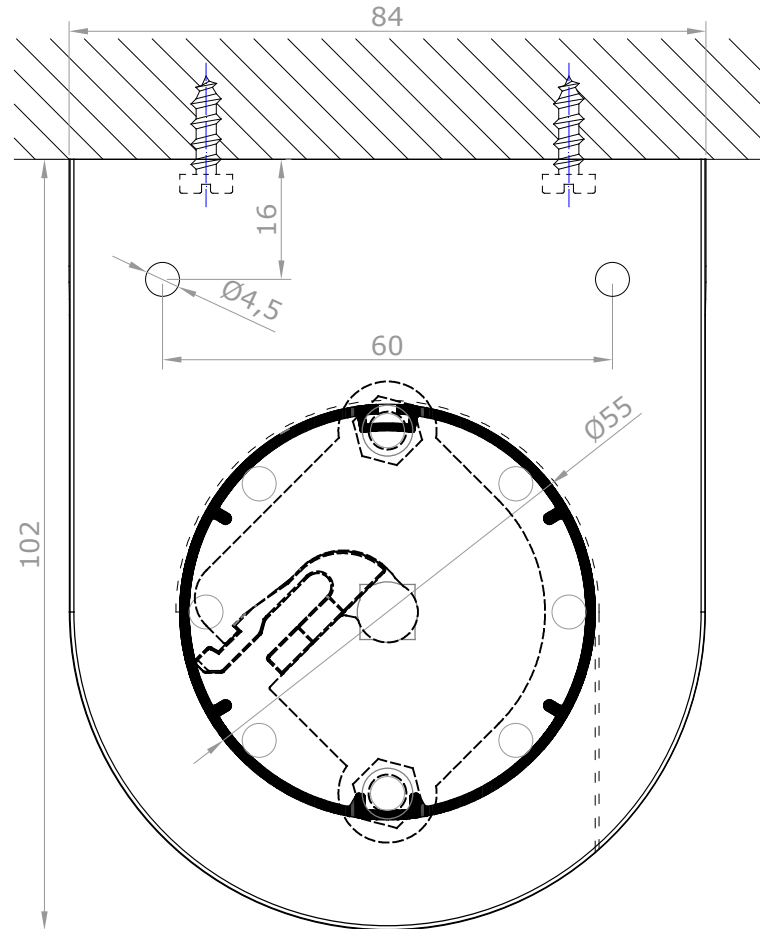
F. REVIS.		BANDALUX	
REVISION	1 2 3 4 5 6 7 8 9		
FECHA	11-01-2017	PLANO Nº	
DIBUJADO	Antonio F.	FORMATO	A-3
ESCALA	Cortina enrollable Premium Plus II Motor Guía U-301 Soportes instalación a techo. Guía U-301 instalación lateral Accionamiento motor 50 Terminal oculto de Ø20mm Tubo Ø55mm		
1/1			



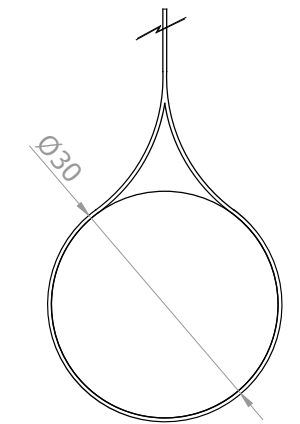
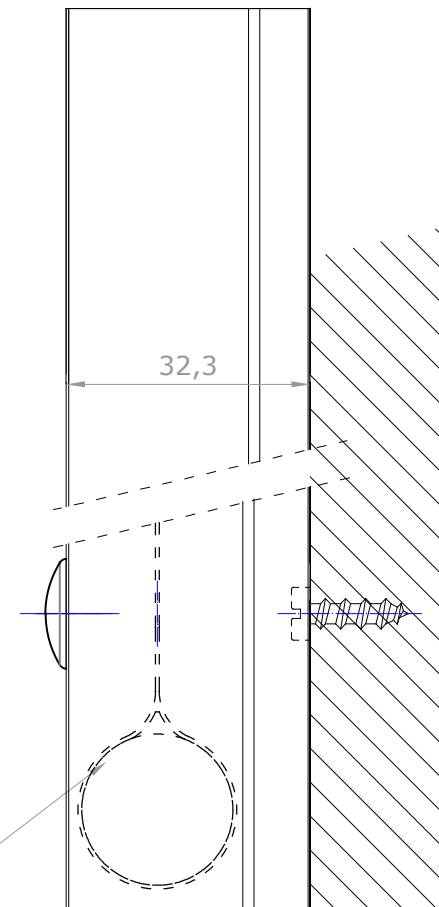
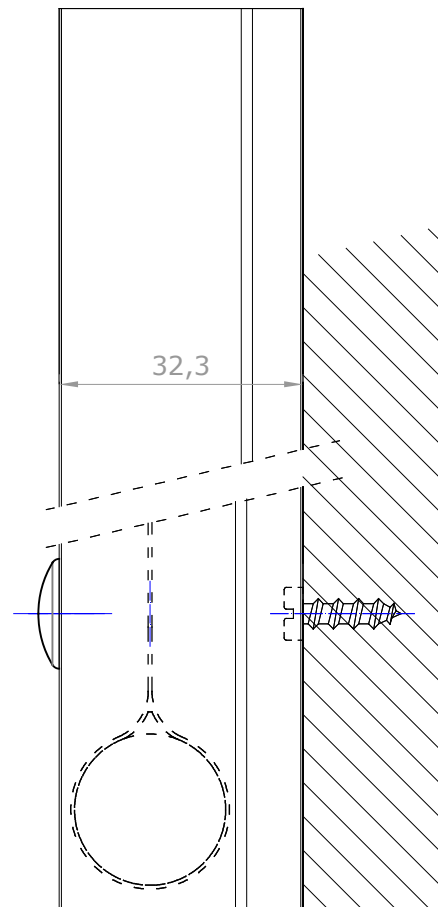
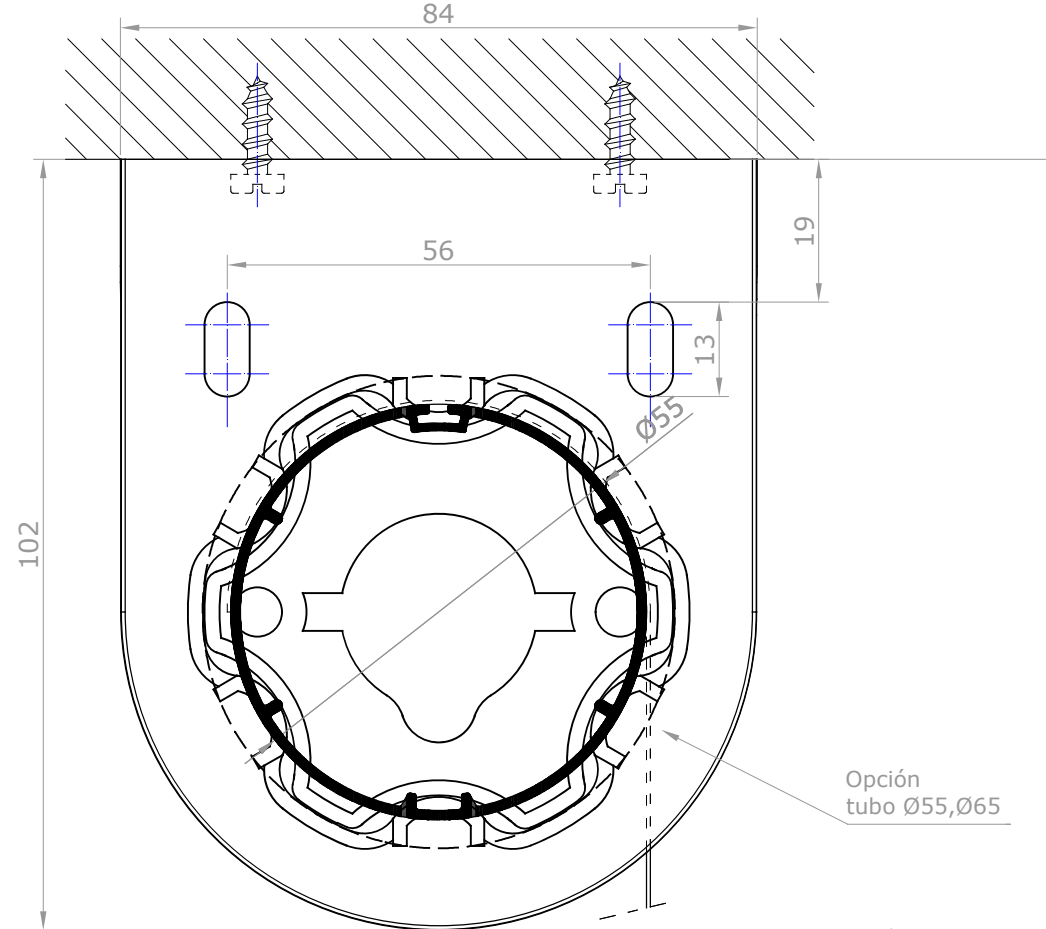
F. REVIS.	BANDALUX		
REVISION			
FECHA	11-01-2017	PLANO Nº	
DIBUJADO	Antonio F.	FORMATO	A-3
ESCALA	Cortina enrollable Premium Plus II Motor Guía U-301 Soportes instalación a techo. Guía U-301 instalación lateral Accionamiento motor 50 Terminal oculto de Ø20mm Tubo Ø55mm		

1/1

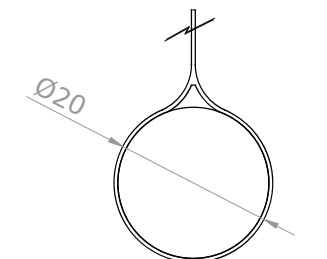
LADO APOYO



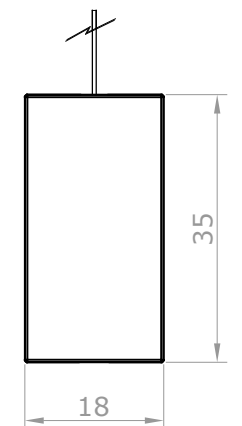
LADO MANDO



Detalle 1:1 terminal oculto Ø30mm

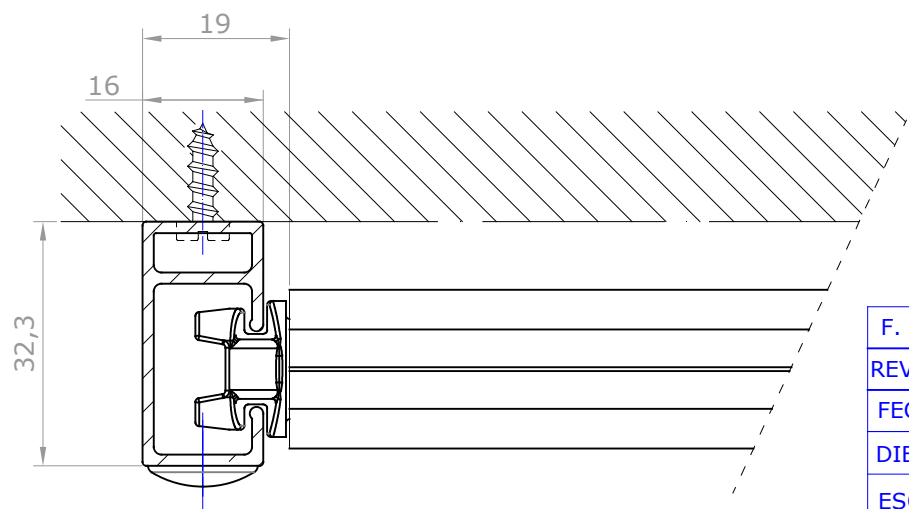
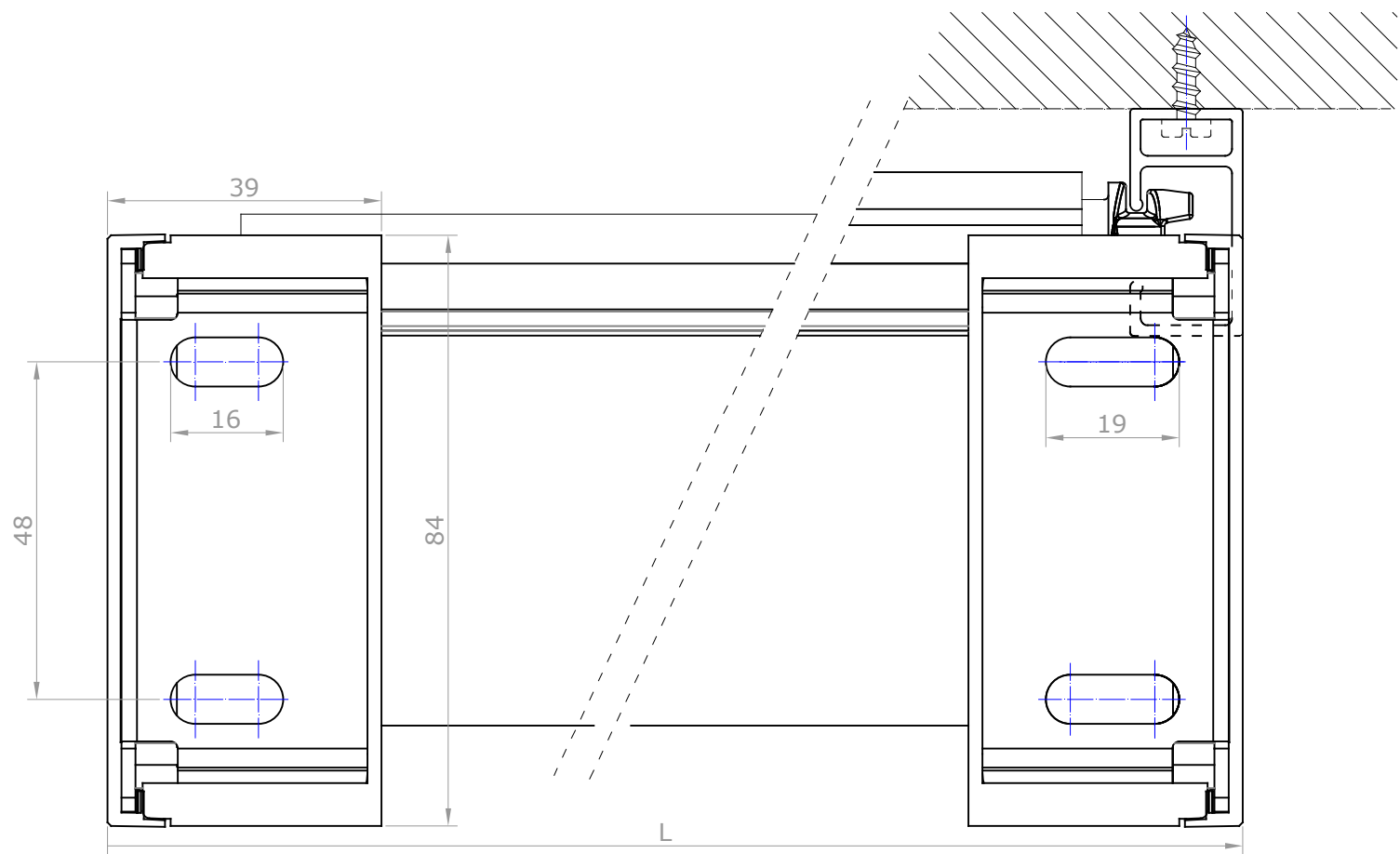
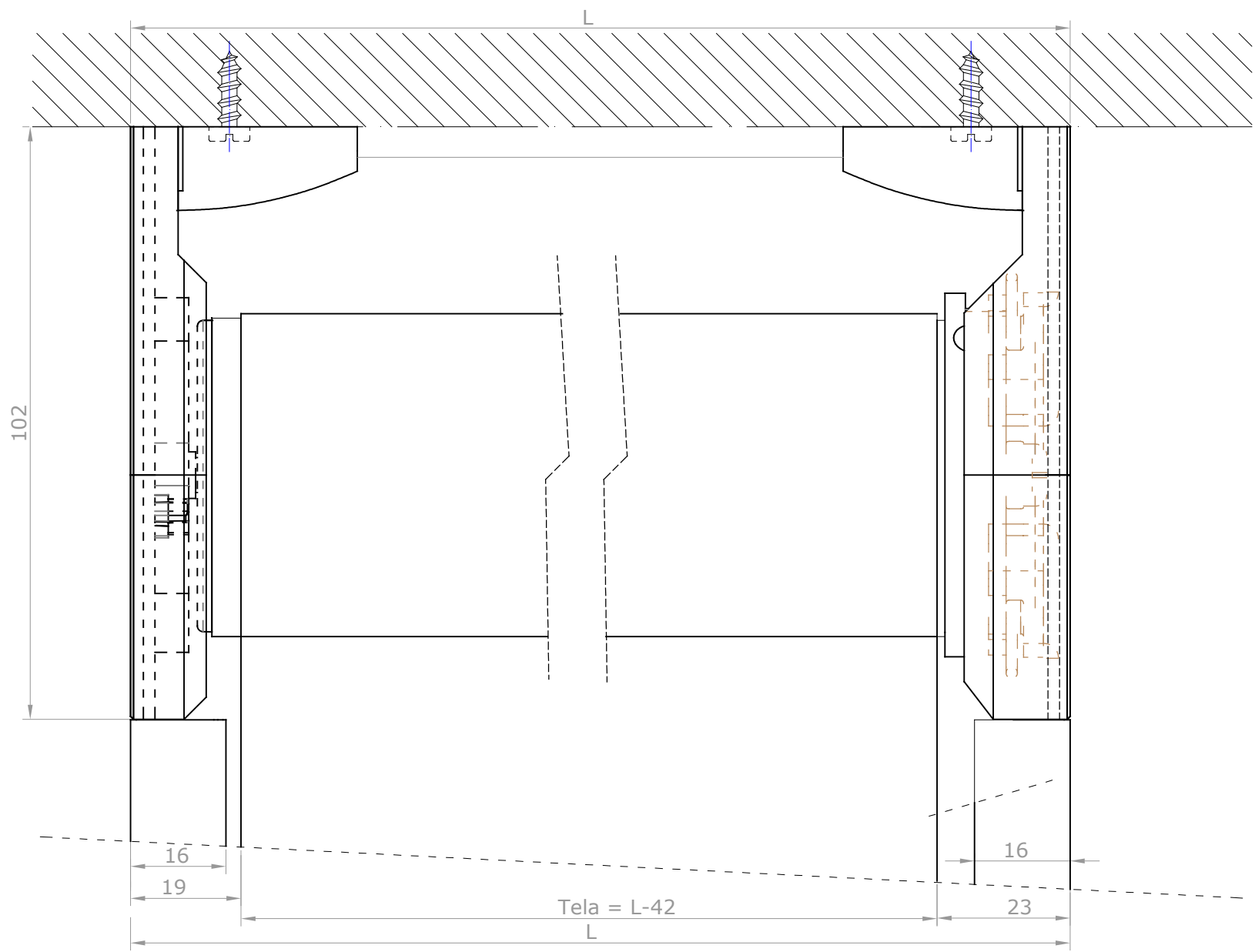


Detalle 1:1 terminal
oculto Ø20mm



Detalle 1:1 terminal Slim 35

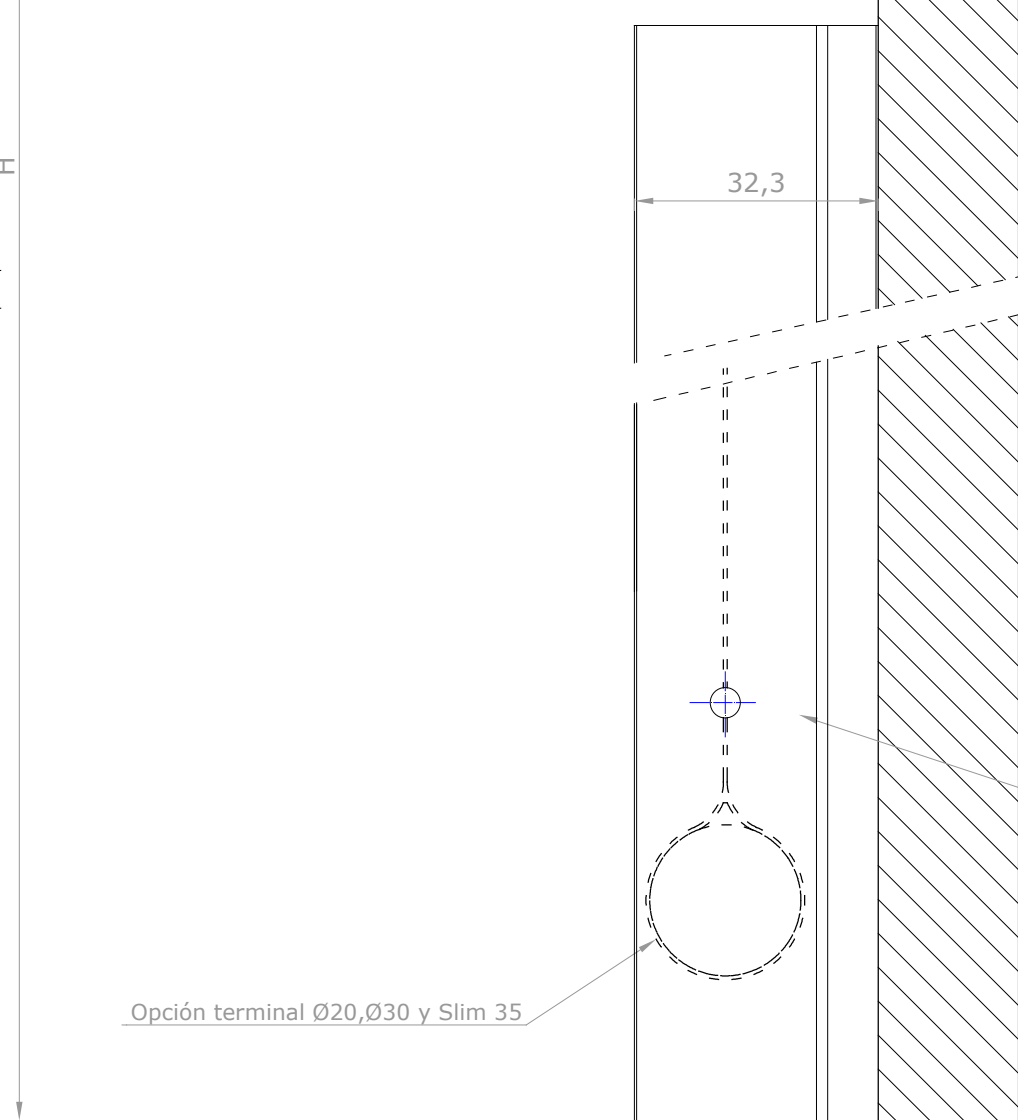
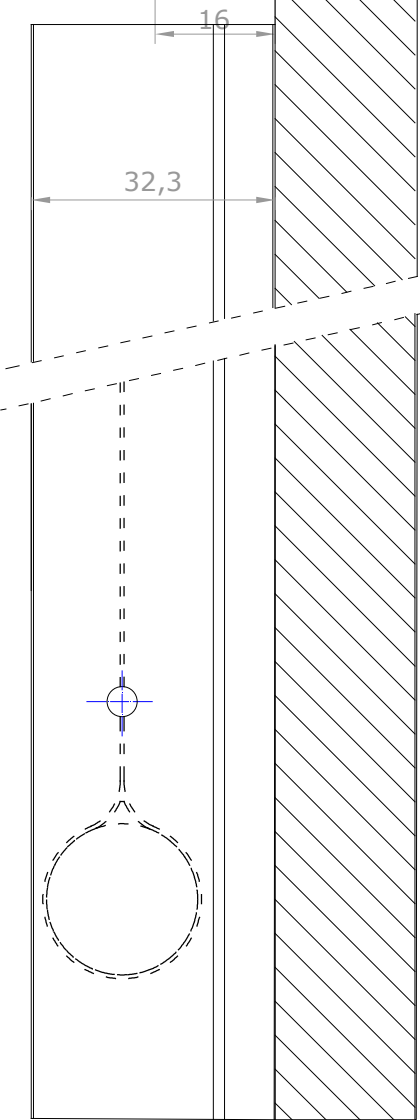
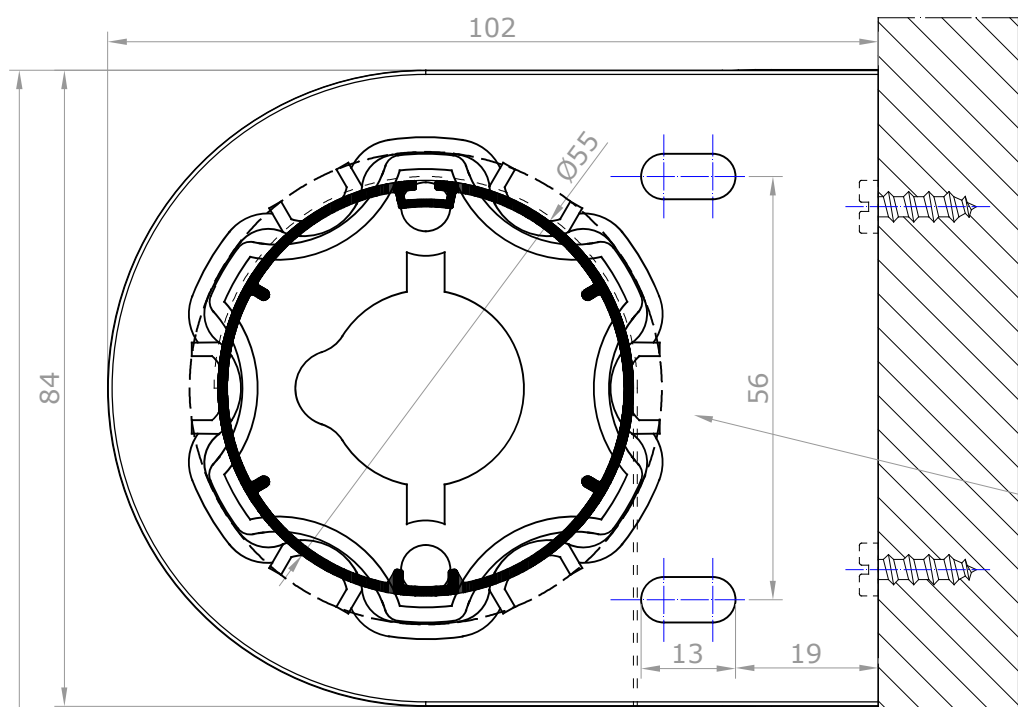
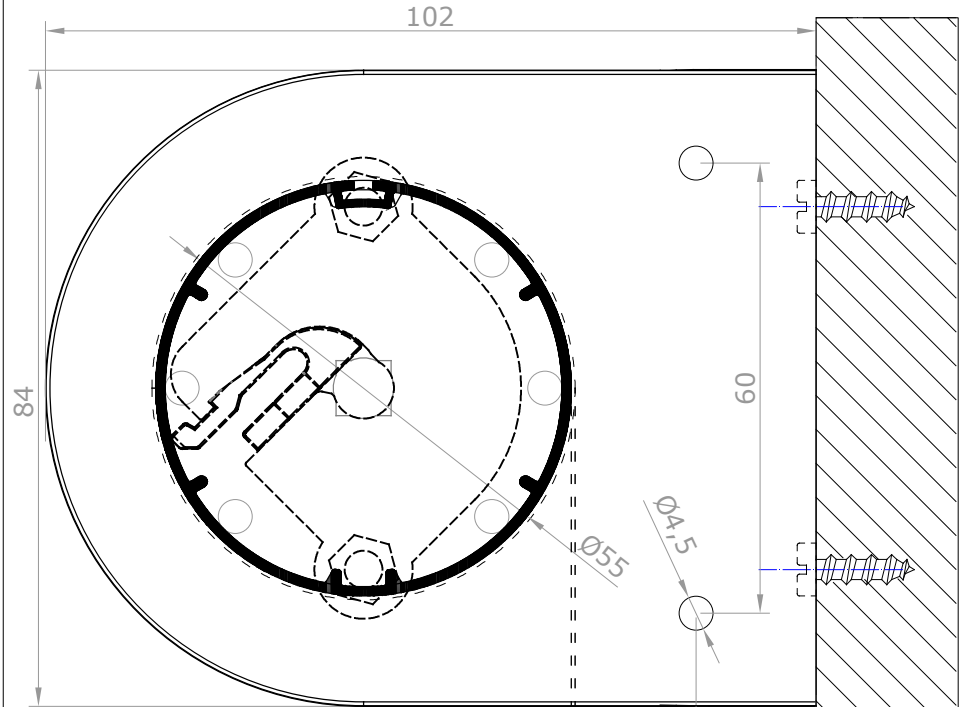
F. REVIS.		BANDALUX	
REVISION	123456789		
FECHA	11-01-2017	PLANO Nº	
DIBUJADO	Antonio F.	FORMATO	A-3
ESCALA	Cortina enrollable Premium Plus II Motor Guía U-301 Soportes instalación a techo. Guía U-301 instalación frontal Accionamiento motor 50 Terminal oculto de Ø20mm Tubo Ø55mm		
1/1			



F. REVIS.		BANDALUX	
REVISION	123456789		
FECHA	11-01-2017	PLANO Nº	
DIBUJADO	Antonio F.	FORMATO	A-3
ESCALA	Cortina enrollable Premium Plus II Motor Guia U-301 Soportes instalación a techo. Guia U-301 instalación frontal Accionamiento motor 50 Terminal oculto de Ø20mm Tubo Ø55mm		
1/1			

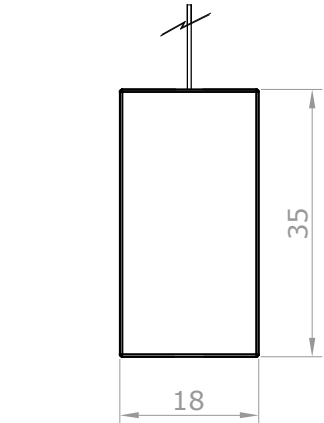
LADO APOYO

LADO MANDO

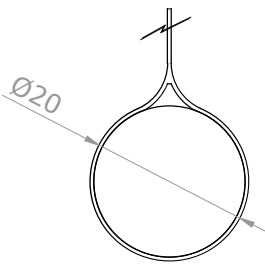


Opción tubo Ø55,Ø65

Detalle 1:1 terminal oculto Ø30mm



Detalle 1:1 terminal Slim 35

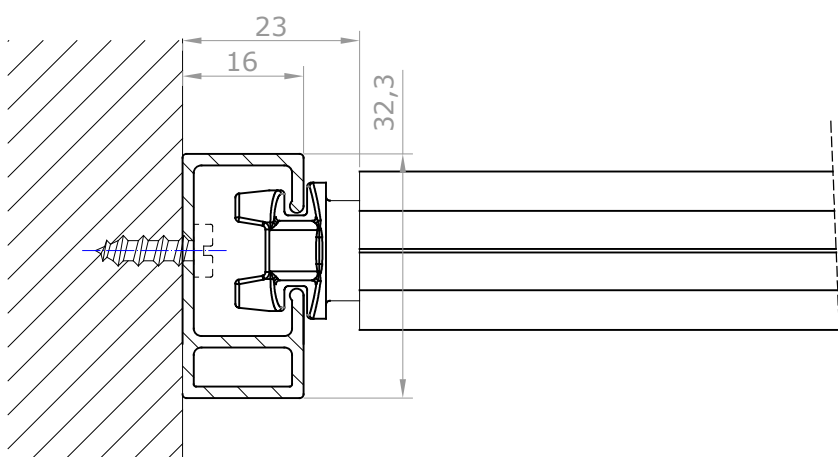
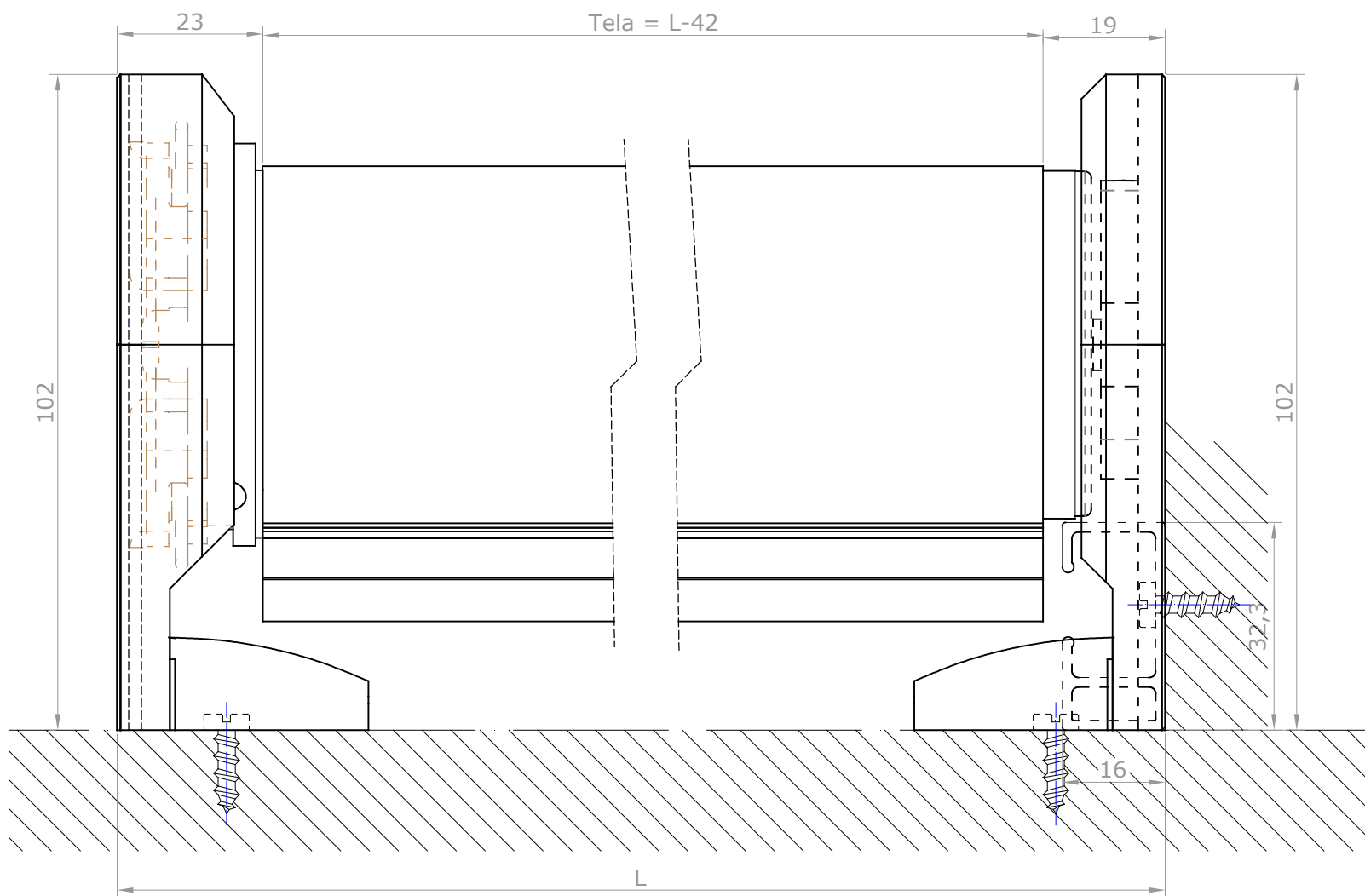
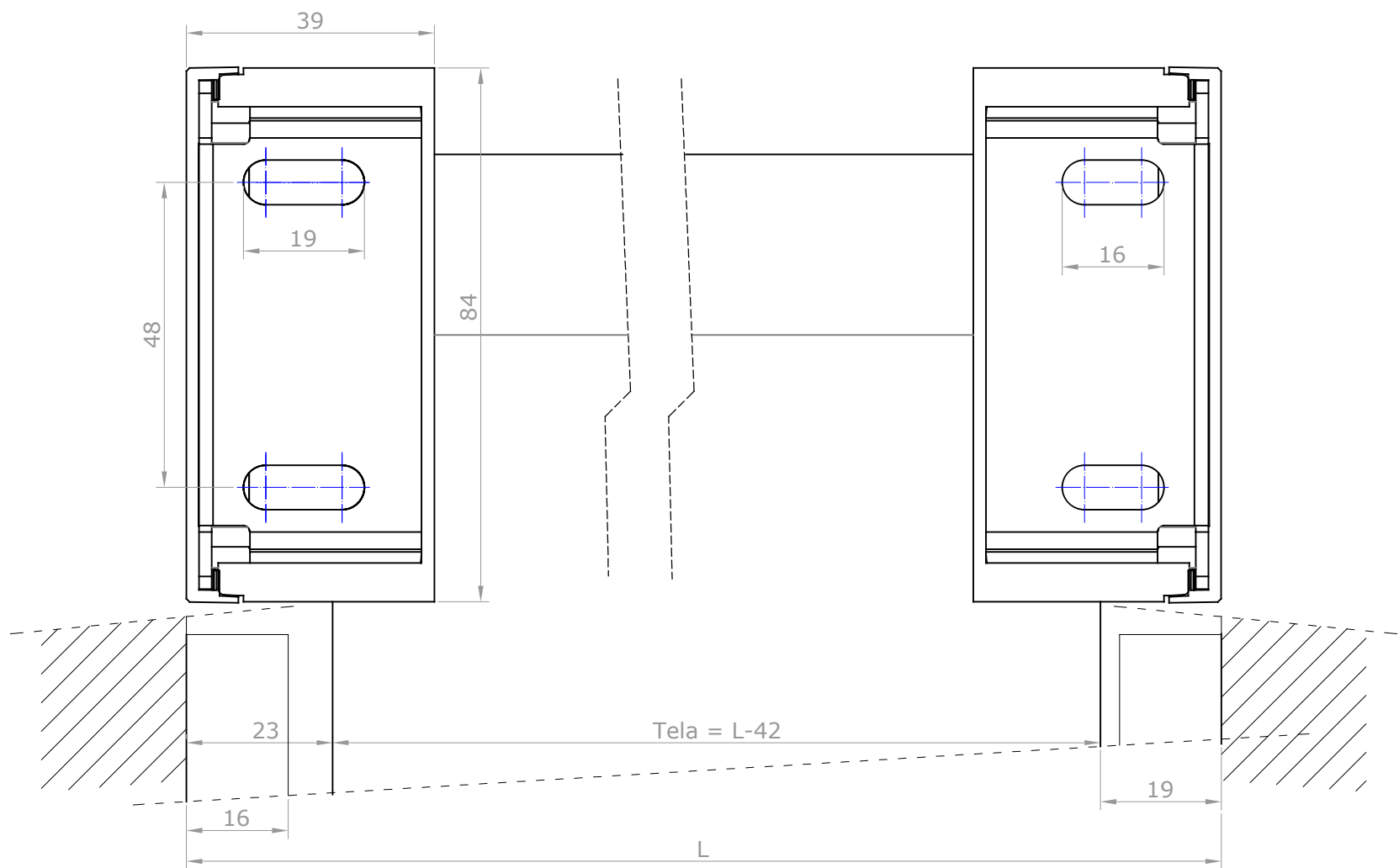


Detalle 1:1 terminal oculto Ø20mm

Taladro instalación lateral

Opción terminal Ø20,Ø30 y Slim 35

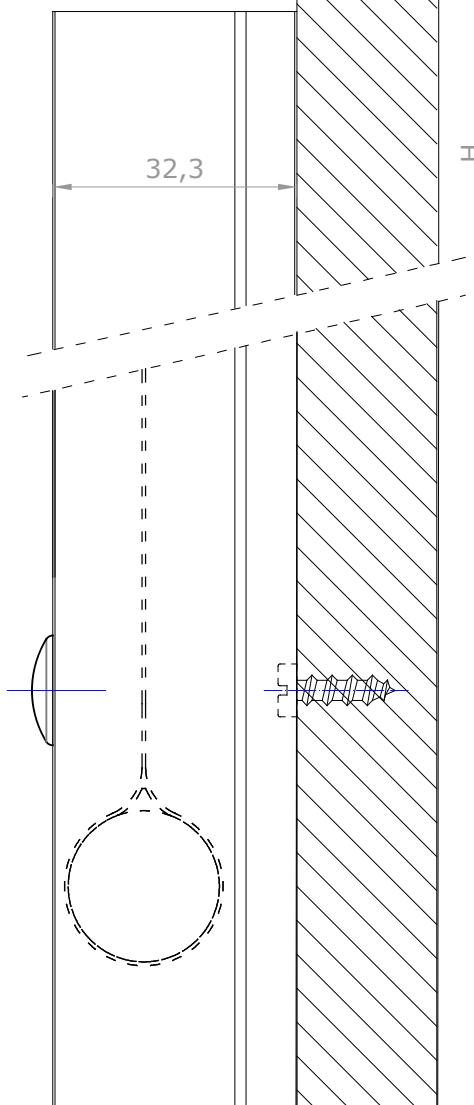
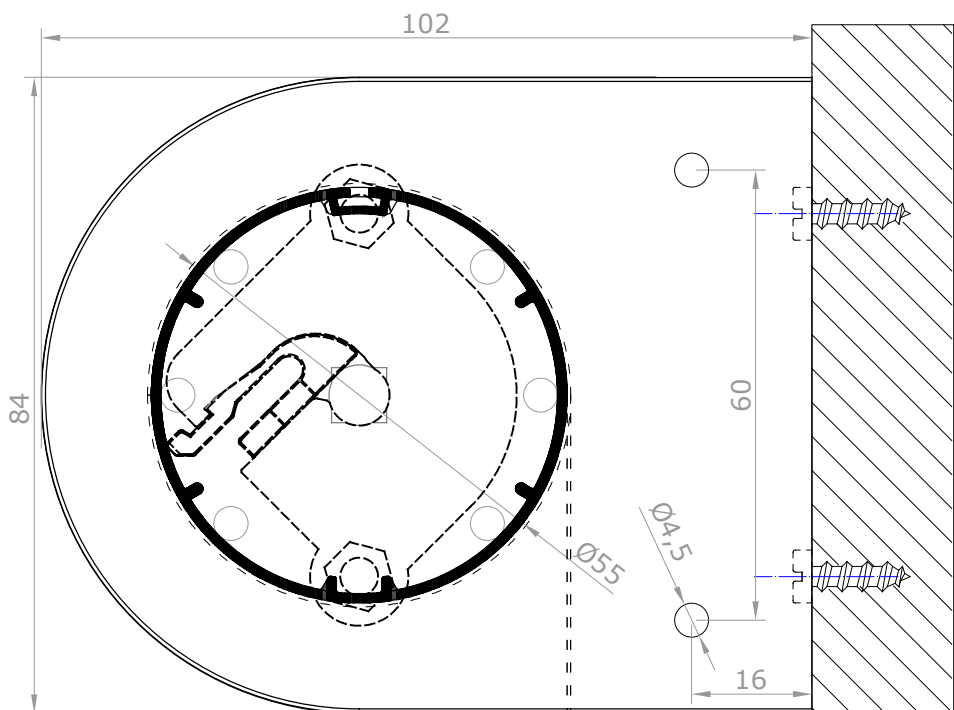
F. REVIS.		BANDALUX	
REVISION	123456789		
FECHA	11-01-2017	PLANO Nº	
DIBUJADO	Antonio F.	FORMATO	A-3
ESCALA	Cortina enrollable Premium Plus II Motor Guía U-301 Soportes instalación a pared. Guía U-301 instalación lateral Accionamiento motor 50 Terminal oculto de Ø20mm Tubo Ø55mm		
1/1			



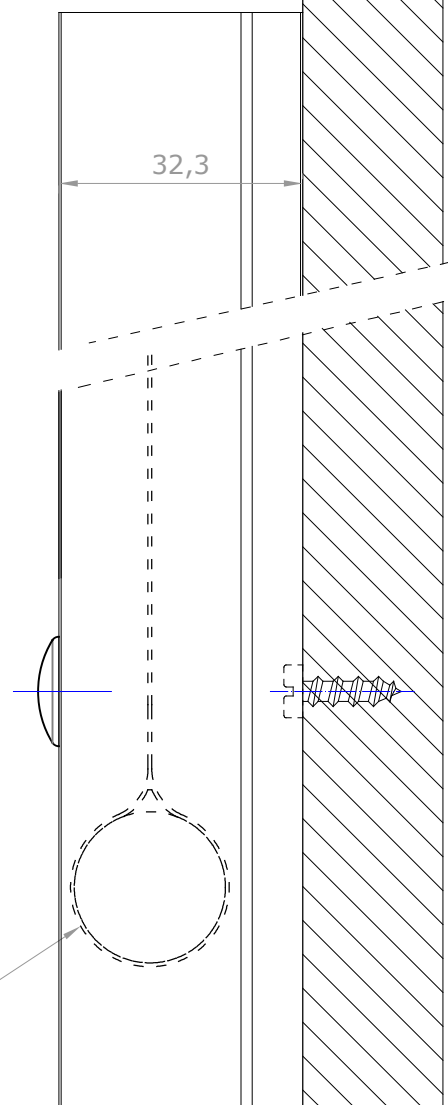
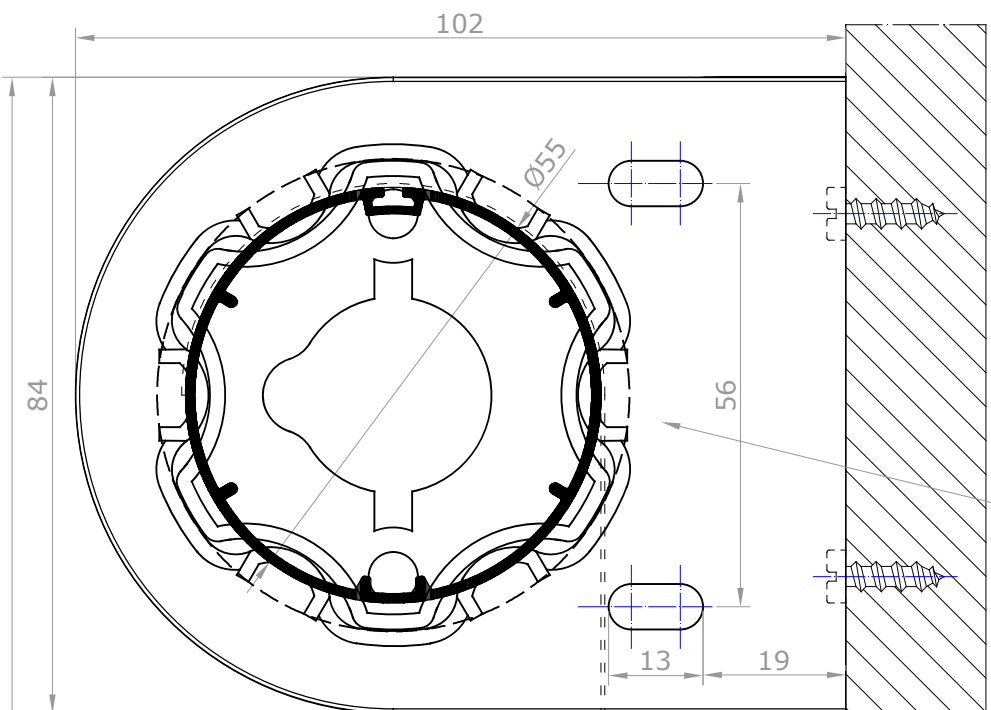
F. REVIS.	BANDALUX		
REVISION			
FECHA	11-01-2017	PLANO N°	
DIBUJADO	Antonio F.	FORMATO	A-3
ESCALA	Cortina enrollable Premium Plus II Motor Guía U-301 Soportes instalación a pared. Guía U-301 instalación lateral Accionamiento motor 50 Terminal oculto de Ø20mm Tubo Ø55mm		

1/1

LADO APOYO

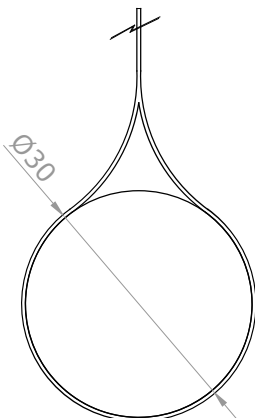


LADO MANDO

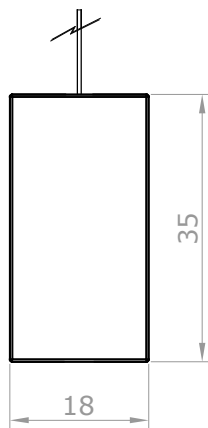


Opción tubo Ø55,Ø65

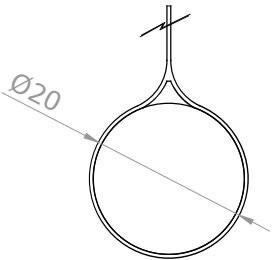
Opción terminal Ø20,Ø30 y Slim 35



Detalle 1:1 terminal oculto Ø30mm

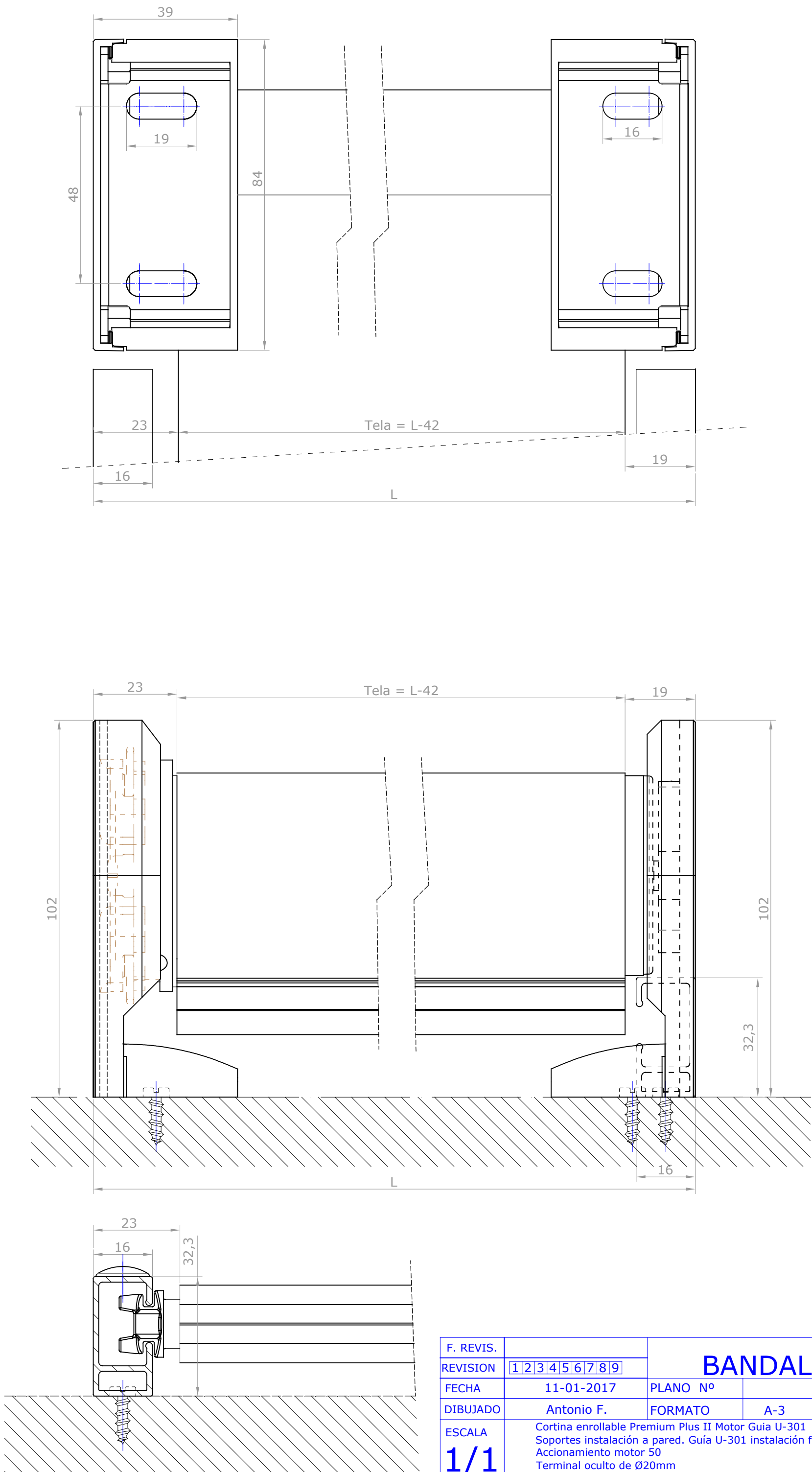


Detalle 1:1 terminal Slim 35



Detalle 1:1 terminal oculto Ø20mm

F. REVIS.		BANDALUX	
REVISION	123456789		
FECHA	11-01-2017	PLANO N°	
DIBUJADO	Antonio F.	FORMATO	A-3
ESCALA	Cortina enrollable Premium Plus II Motor Guía U-301 Soportes instalación a pared. Guía U-301 instalación frontal Accionamiento motor 50 Terminal oculto de Ø20mm Tubo Ø55mm		
1/1			



F. REVIS.	BANDALUX		
REVISION			
FECHA	11-01-2017	PLANO N°	
DIBUJADO	Antonio F.	FORMATO	A-3
ESCALA	Cortina enrollable Premium Plus II Motor Guía U-301 Soportes instalación a pared. Guía U-301 instalación frontal Accionamiento motor 50 Terminal oculto de Ø20mm Tubo Ø55mm		

1/1